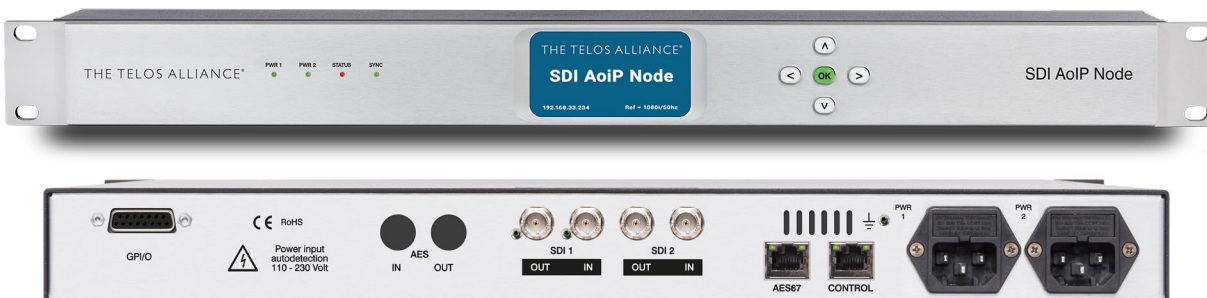


Telos Alliance® SDI AoIP Node

Bridging the Present and Future of TV Technology



Introduction

Congratulations on your purchase of SDI AoIP Node. We know that you're anxious to get started, so this quick start guide (QSG) will take you from 'out of the box' to 'up and running' as quickly as possible by illustrating the steps required to prepare the SDI AoIP Node to de-embed and convert up to 8 pairs of audio from two SDI inputs to AES67.

Plug each of the SDI AoIP Node's two power supplies into two different AC power circuits. Plug an Ethernet cable from your network into the Control Ethernet port.

See Figure 1.



Figure 1 - SDI AoIP Node Rear Panel

Configuring Network Control

When the unit is ready, the front panel display will light up as shown in Figure 2 below

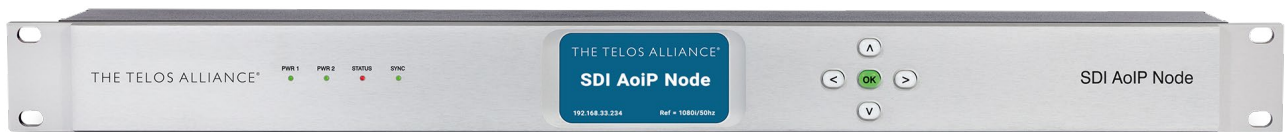


Figure 2 - SDI AoIP Node display and navigation

To the right of the display there are four navigation buttons – Left, Right, Up, and Down - and an OK button. Press the right button until the IP Configuration (Control) edit screen is visible as shown in Figure 3, below.

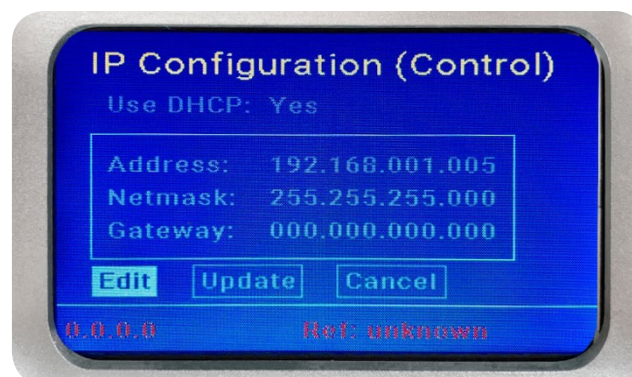


Figure 3 - Control Port IP Address

1. Press the OK button to highlight "Edit"
2. Press OK again to highlight "Use DHCP"
3. Press Right to highlight "Yes"
4. Use the Down button to change the selection to "No"
5. Press the Left button to highlight "Static IP Settings"
 - a. Press Down to navigate to "Address:"
 - b. Press Right to move to the first digit in the "IP Address" field
 - c. Use the Up and Down buttons to change the digit
 - d. Press Right or Left to select another digit to edit
 - e. Repeat to set the entire IP address
 - f. Press Right or Left to highlight the "Address:" field
6. Repeat the above steps to edit the Netmask and Gateway
 - a. The gateway may be set to 000.000.000.000 if no Gateway is required
7. After the Gateway is set, press Left to highlight "Gateway" and Down to highlight "Update"
8. Press OK when "Update" is highlighted to save the new IP information

Connecting and Configuring the SDI AoIP Node Using a Browser

The user interface to the SDI AoIP Node uses an HTML 5 web browser on any platform. Firefox and Chrome are both recommended. Using any computer on the same network and subnet as SDI AoIP Node, enter the SDI AoIP Node’s IP address as shown below. Enter the default password “1234” and click “Log In”. See Figure 4.

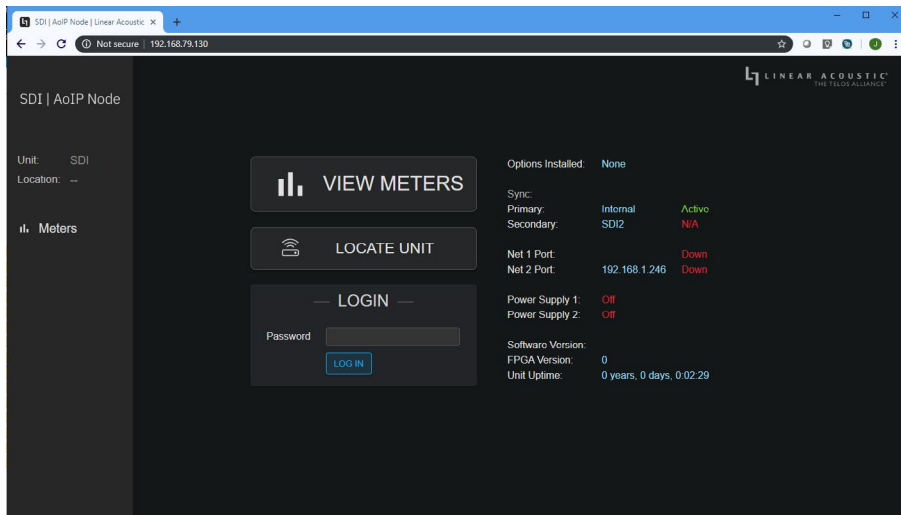


Figure 4 - Log In

Once logged in, select “System”, then under “Device” enter a “friendly” name and a location for this particular unit. See Figure 5.

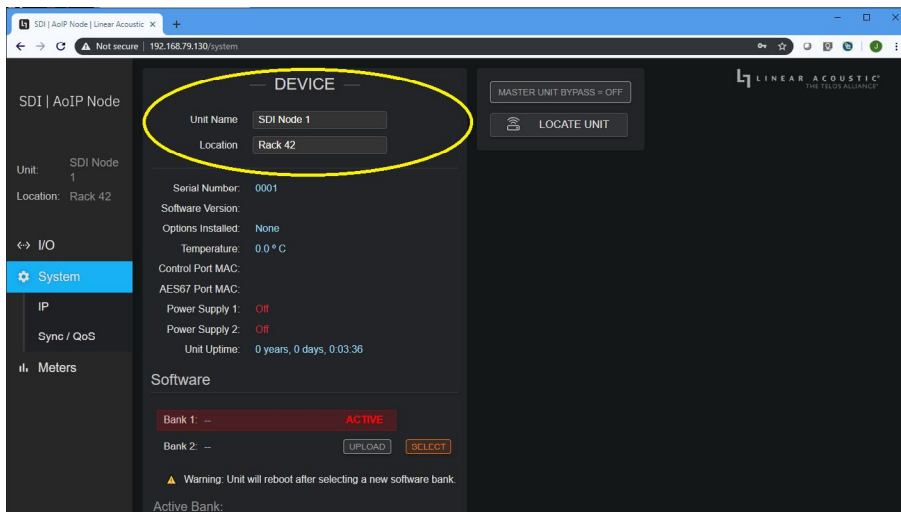


Figure 5 - System Screen

Configuring I/O

Connect your SDI source(s) to the SDI input(s) on the rear panel. Select "I/O" then, "Reference Clock", then AES67/PTP. The Reference Clock indicator will show AES67/PTP as the primary clock source and a green light will indicate the SDI AoIP Node is locked to the PTP Master. A secondary sync source can be selected if desired. The internal clock is selected in the example. See Figure 6.

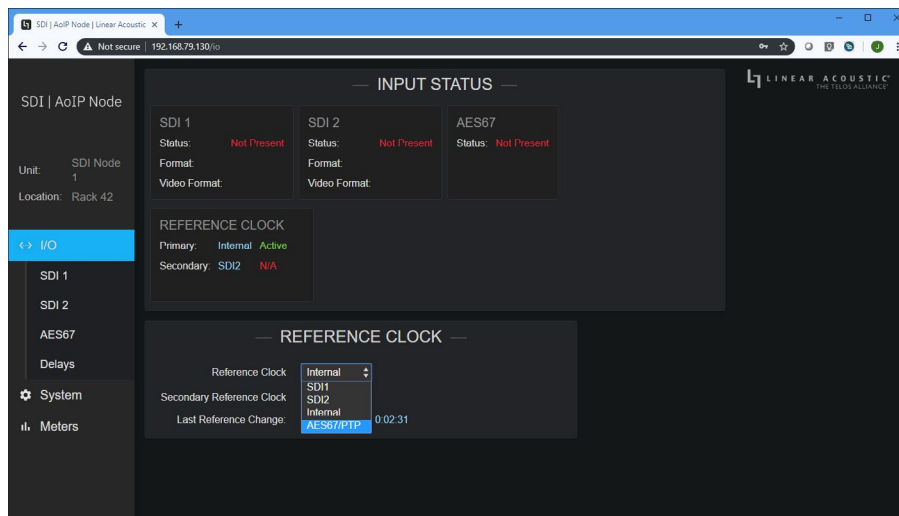


Figure 6 - Reference Clock

Select "AES67", then use the dropdown menu under "AES67 Out Routing" to select the AES67 channel destinations for the SDI Inputs. See Figure 7.

An AES67 Output dropdown is shown open in Figure 7. The router allows you to select any of the SDI input pairs (or any of 8 x AES67 pairs) to be routed to the network.

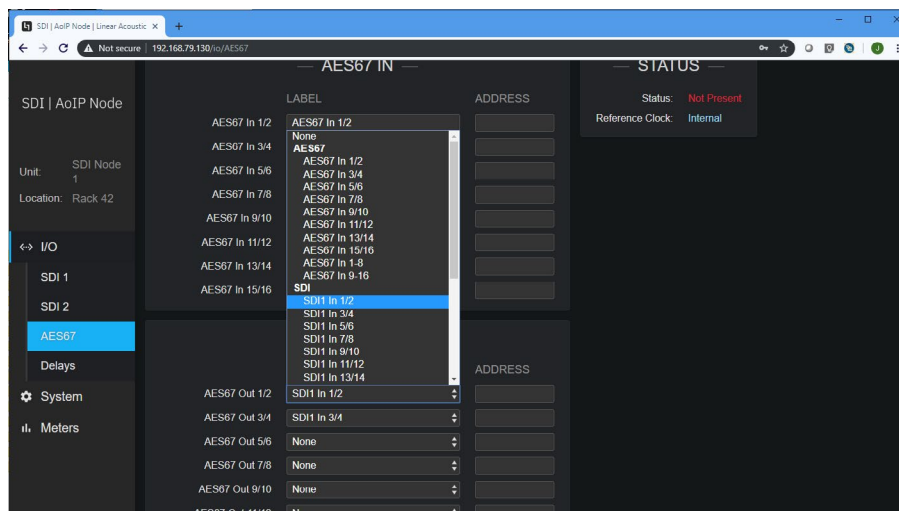


Figure 7 - SDI Routing to AES67 outputs

Click in the "Address" edit box to enter an AES67 multicast address for each AE67 pair. See Figure 8.

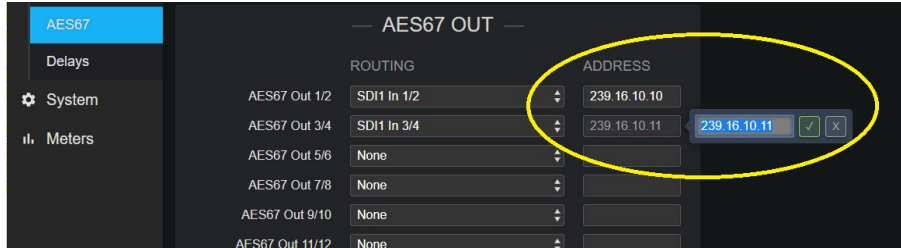


Figure 8 - AES67 Multicast Addresses

Selecting "Delays" under I/O allows you to set the video delay equal to the SDI AoIP Node's audio latency. In instances where the SDI output needs to be delayed by an even frame, the video delay can be set to 1 full frame and the audio delay then increased to make unit's latency plus any additional delay equal to one full frame. In the example below, the video delay is set to match the SDI AoIP Node's latency.

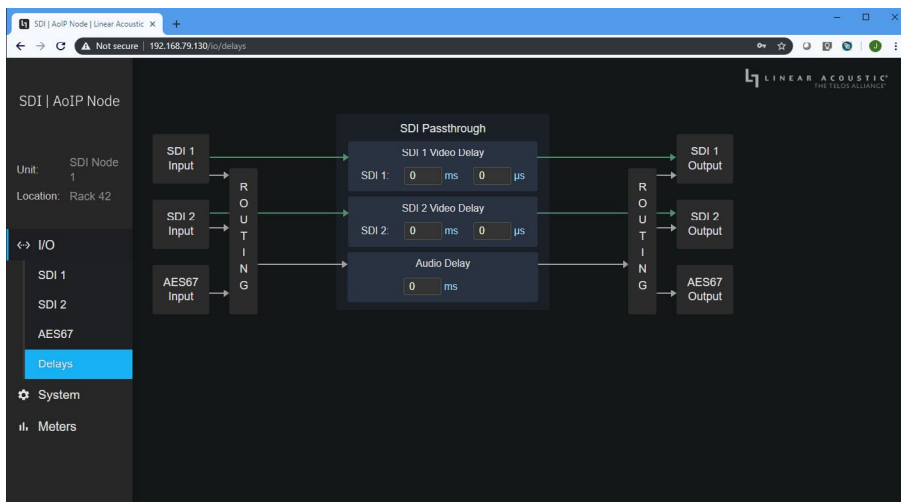


Figure 9 - Delay Settings

Conclusion

This completes the Quick Start Guide. Please see the "Quick Links" pages below for additional support information.

This Page Intentionally Left Blank

This Page Intentionally Left Blank

QUICK LINKS

Website

TelosAlliance.com/Linear

24/7 Tech Support

Radio: +1 (216) 622-0247

TV: +1 (717) 735-3611

Radio: support@telosalliance.com

TV: support@linearacoustic.com

Subscribe to DirectCurrent

Weekly updates on all things broadcast via email

TelosAlliance.com/directcurrent

Social Media

Facebook: [/TelosAlliance](https://www.facebook.com/TelosAlliance)

Twitter: [@TelosAlliance](https://twitter.com/TelosAlliance)

LinkedIn: [/TelosAlliance](https://www.linkedin.com/company/TelosAlliance)

YouTube: [TelosAllianceTV](https://www.youtube.com/TelosAllianceTV)

Google+: [+TelosAlliance](https://plus.google.com/+TelosAlliance)

Product Catalog

TelosAlliance.com/now

